

GSM

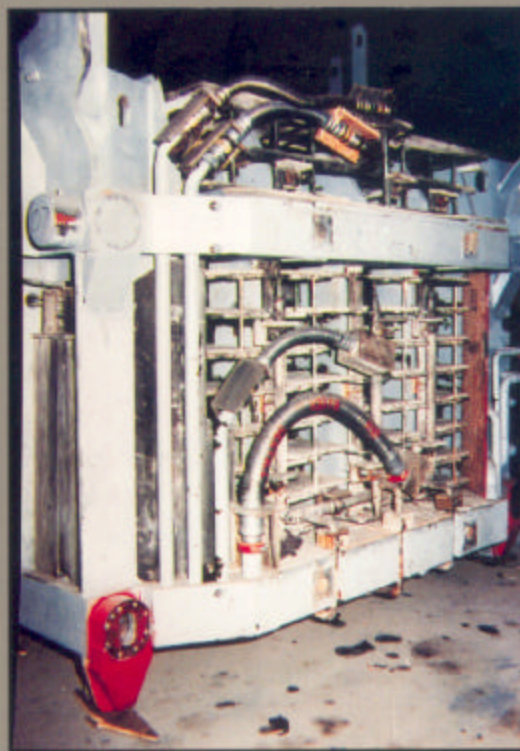
CONTINUOUS CASTER

HOSE

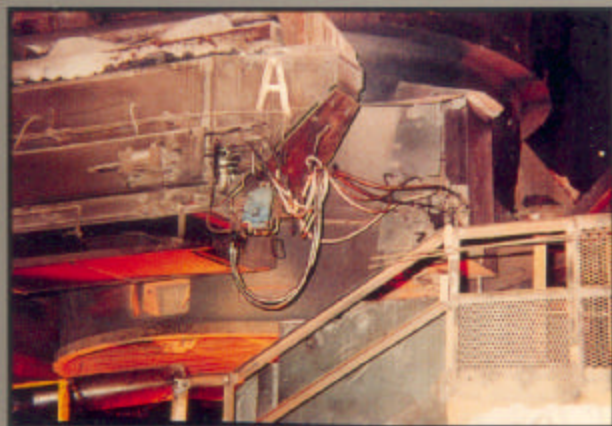
Continuous casting is an essential processing step in modern steel plants. Whether molten steel is cast directly into slabs, billets or blooms, the process is continuous and can afford no down time. GSM hose is an essential link in the water cooling systems, hydraulic systems and stirring processes of the continuous casting mechanics.

Applications include:

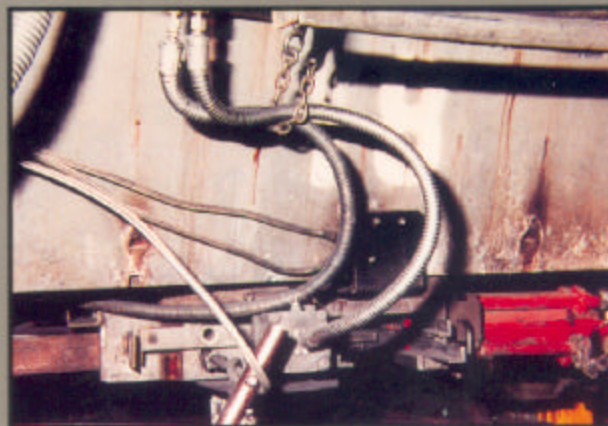
- GSM Mold and "O" Segment Water Hose
- GSM Spray Chamber Water Hose
- GSM Tundish Hose
- GSM Argon Stirring Hose
- GSM Slide-Gate Hydraulic Hose
- GSM Straightener Hydraulic Hose
- GSM Torch Cut-Off Hose
- GSM Run-Out Table Hydraulic Hose
- GSM Bender Water Cooling Hose



GSM Water Hose on repaired bender section under the mold on caster.



GSM Hydraulic Hose from the turrett arm, activating the slide gate on the ladle.



GSM Hydraulic Hose activates slide gate system on the tundish.

Our unique insulated and armored hose assemblies will withstand the most severe environments, such as: heat, molten splashes, flexing, abrasion and kinking.

Let GSM solve your next hose problem.

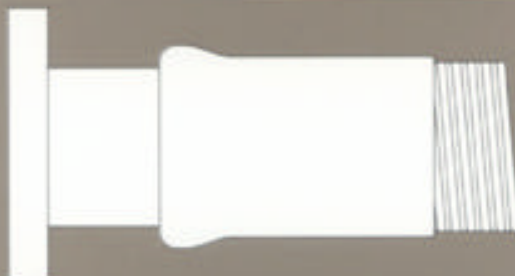
COUPLINGS

GSM offers various hose couplings to suit your specific hose application.

GM Male Couplings are designed for attachment to GSM hose. Installed by our own factory methods, the coupling becomes an integral part of the hose.



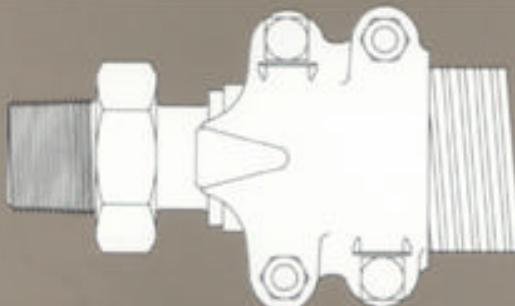
GMS Couplings are swaged on the hose by use of a Mulcoram and selected dies. This technique provides an externally swaged coupling that has retention ratings higher than the burst pressure of the interior hose.



GMS Victaulic Swaged Couplings offer easy installation and provides the same high retention factors as GMS Couplings.



"Boss" Couplings are male or female, ground joint or washer type. In applications where safety is a factor, such as steam service, "Boss" or "P-1 Boss" offset interlocking clamps are recommended.



Couplings and hose sizes range from 1/4" - 10" inside diameter.



Metal ball-joint armor can be galvanized steel or stainless steel. It offers greater resistance to external abuse than all-metal or plain rubber hose, yet it remains extremely flexible and resists kinking or collapsing in tight loops, knots or bends.

If needed, layers of insulation between the ball-joint armor and the hose itself protect the entire assembly from external heat. Additional layers provide further protection, and different types of insulation or other inner materials can be utilized to meet special needs.

The hose carcass is the reinforcing section of the hose. It can be composed of textile or wire braid, spiral wire or cable. Shown here is a wire braid hose.

The tube of the hose is compounded to resist the action of the material being handled: steam, air, ammonia, chemicals, oxygen, hydraulic oil, oil mist, cooling water or any other substance that can be handled by elastomeric hose. If a metal inner hose is required, GSM can protect it on the outside from heat and/or external abuse.